



# TOOLS



**Before**

Hard to approach with tool  
and to pump air in.

**NO REQUIRES TOOL !**



**DRC**

## AIR VALVE BIG NUT

- Nut for valve stem that can be used without a wrench.
- Also for use as a tool to help pull off the air valve stem when changing the tire and keep the valve stem out when pumping the air in.
- Knurled surface is easy to turn.

**Part number Color Size**

**D59-04-220** Red W 20 mm x T 6 mm

**After**



**STEP1:** Pass air valve puller head through the valve hole.



**STEP2:** Install valve puller head on air valve on the tube.



**STEP3:** Replace air valve in the tire.



**STEP4:** Pull on the air valve wire. The air valve will appear.



**MXA RATING**



This simple little tool is worth its weight in gold when it comes time to go valve stem fishing.

**DRC**

## AIR VALVE PULLER

- Easy to pull the air valve stem through the hole on the rim.
- Useful during tire changes and flat repairs.
- Air valve puller head may also be used for air valve core removal.

**Part number Color**

**D59-38-201** Black

**D59-38-202** Red

**D59-38-203** Blue



**DRC**

## AIR VALVE CORE DRIVER

- Valve core remover designed for quick operation.
- Remover tip is made of chrome molybdenum steel.
- Aluminum knurled grip.
- Length : 45 mm

**Part number Color**

**D59-04-100** Ti-Color

**D59-04-103** Red



## FRONT SUSPENSION TOOL



**DRC**

### PRO FORK CAP WRENCH

- Aluminum front fork cap wrench will not damage your front fork cap.
- Anodized surface finish.
- Available for SHOWA, KYB, WP and WP kit suspension.

Bike	Year	Front Fork	Part number
CRF450R	09-14	KYB ( 49 mm )	<b>D59-37-170</b>
YZ125/250	06-19		
YZ250F	06-19		
YZ250F	06-19		
YZ125X	17-19		
YZ250X	16-19		
YZ250FX	15-19		
YZ450FX	16-19		
WR250F	15-19		
WR450F	13-19		
KX450F	06-14		
RMZ250	16-19		
EC250	18-19		
EC300	18-19		
XC250	18-19		
XC300	18-19		
ENDURO GP250	18-19		
ENDURO GP300	18-19		

Bike	Year	Front Fork	Part number
CRF250R	04-19	SHOWA ( 50 mm )	<b>D59-37-171</b>
CRF450R	04-08		
CRF250RX	17-19		
CRF450RX	17-19		
CRF250X	06-17		
CRF450X	05-19		
CRF450L	19		
KX250F	06-18		
KX250	19		
KX450F	15-18		
KX450	19		
RM125	06-08		
RM250	07-08		
RMZ250	07-15		
RMZ450	05-19		
RMX450Z	10-17		
DRZ400SM	05-17		

Bike	Front Fork	Part number	Part number
125SX	07-19	WP ( 50 mm )	<b>D59-37-172</b>
150SX	09-19		
250SX	07-19		
250SX-F	07-19		
350SX-F	11-19		
450SX-F	07-19		
250/300EXC	17-19		
250-500EXC-F	17-19		
250/300XC	17-18		
250-450XC-F	17-19		
125-300XC-W	17-19		
FC250-450	17-19		
TC125/250	17-19		
FE250-501	17-19		
TE150-300	17-19		
FX350/450	17-19		
TX125/300	17-19		

Bike	Front Fork	Part number
WP MXMA4800 Conevalve	WP ( 35 mm )	<b>D59-37-173</b>



KYB

WP

4CS

YouTube



**DRC**

### FORK COMPRESSION VALVE REMOVAL TOOL

- Fork compression valve removal tool for KYB, SHOWA, and KTM WP front forks.
- Use this tool with DRC fork cap wrench for removing compression valve from the inner cartridge.
- Made of aluminum, anodized finish with DRC laser printed logo and wrench size.

Bike	Year	F-Fork	Part #
CRF450R	09-12	KYB	<b>D59-24-016</b>
YZ125/250	05-19		
YZ250F/450F	05-19		
YZ125X	17-19		
YZ250X	16-19		
YZ250FX	15-19		
YZ450FX	16-19		
WR250F	17-19		
WR450F	12-19		
KX250	05-08		
KX450F	06-12		
KLX450R	07-15		
EC250/300	18-19		
XC250/300	18-19		
ENDURO GP250	18-19		
ENDURO GP300	18-19		
KX250F	13-18	SHOWA	<b>D59-24-020</b>
KX250	19		
KX450F	15-18		
RM-Z450	15-17		

Bike	Year	F-Fork	Part #
125-250SX	07-19	WP	<b>D59-24-026</b>
	15-16	WP ( 4CS )	<b>D59-24-027</b>
	07-19	WP	<b>D59-24-026</b>
250-450SX-F	15-16	WP ( 4CS )	<b>D59-24-027</b>
125-300EXC 6DAYS	13-16	WP ( 4CS )	<b>D59-24-027</b>
250-500EXC-F 6DAYS	13-16	WP ( 4CS )	<b>D59-24-027</b>
300XC-W 6DAYS	14-16	WP ( 4CS )	<b>D59-24-027</b>
350XCF-W 6DAYS	14-16	WP ( 4CS )	<b>D59-24-027</b>
250-300XC	14-16	WP ( 4CS )	<b>D59-24-027</b>
	17-18	WP	<b>D59-24-026</b>
250-450XC-F	14-16	WP ( 4CS )	<b>D59-24-027</b>
	17-19	WP	<b>D59-24-026</b>

Bike	Year	F-Fork	Part #
TC125-250	14	WP	<b>D59-24-026</b>
	15-16	WP ( 4CS )	<b>D59-24-027</b>
	17-19	WP	<b>D59-24-026</b>
	14	WP	<b>D59-24-026</b>
FC250-450	15-16	WP ( 4CS )	<b>D59-24-027</b>
	17-19	WP	<b>D59-24-026</b>
TE125-300	14-16	WP ( 4CS )	<b>D59-24-027</b>
FE250-501	14-16	WP ( 4CS )	<b>D59-24-027</b>
TX300	17-19	WP	<b>D59-24-026</b>
FX350-450	17-19	WP	<b>D59-24-026</b>
701 ENDURO	17-18	WP ( 4CS )	<b>D59-24-027</b>

**DRC**

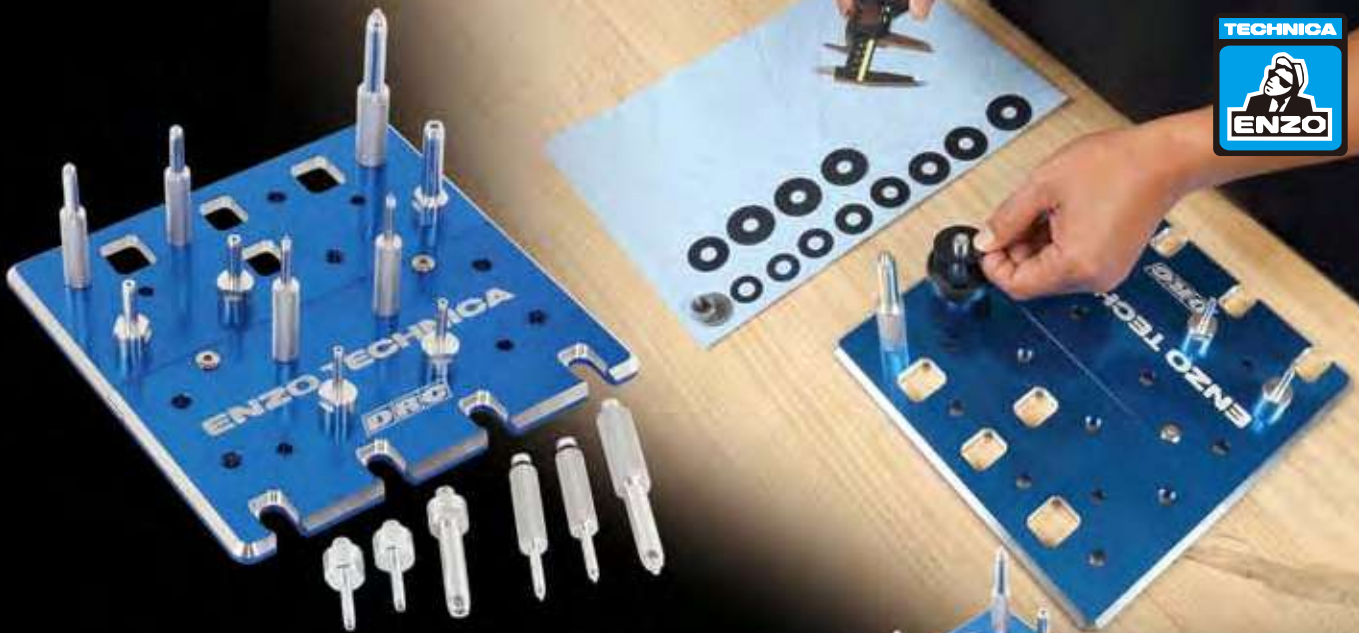
### SEALING BOLT ATTACHMENT

- Removable tool for SHOWA SFF air fork bottom sealing bolt.
- Specially designed for SHOWA SFF Air fork.
- Sealing bolt size = Allen key 22 mm
- Can be used on front suspension equipped

Part number  
**D59-37-120**  
SHOWA SFF-AIR







**ENZO DRC**

## VALVE SETTING PLATE

- ENZO DRC co-developed product.
- Designed to stack suspension valve shims during your suspension works.
- Can hold front and rear suspension valve shims.

Part number  
**ED59-37-220**

Set pin and screw pin

Pin 6 mm : 4 pcs	Screw pin 6 mm : 4 pcs
Pin 8 mm : 2 pcs	Screw pin 8 mm : 2 pcs
Pin 12 mm : 2 pcs	Screw pin 12 mm : 2 pcs

Rear

Front

Can also be used by disassembling, for front / rear use.



14 mm

17 mm

**ENZO DRC**

## REAR SHOCK HIGH COMP ADJUSTER

- ENZO DRC co-developed product.
- Click feeling allows easy adjustment of rear suspension high compression.
- Available for 14 mm and 17 mm adjuster sizes.

Part number	Size	Color
<b>ED59-37-214</b>	14 mm	Black
<b>ED59-37-217</b>	17 mm	Blue



# REAR SUSPENSION TOOL

YouTube



KYB  
SHOWA 1,2



WP

KYB

SHOWA 1

SHOWA 2

WP

**DRC**

## RCU BLEED CUP

- Air bleed cup for KYB, SHOWA and WP rear suspensions.
- Make your rear suspension air bleeding easy.
- Titanium anodized with DRC laser printed logo on cup body.
- Can be used on suspension with bleeding bolt hole.

Part number	Suspension	Color
<b>D59-37-157</b>	WP	Orange / Blue
<b>D59-37-158</b>	SHOWA 1	Blue
<b>D59-37-159</b>	SHOWA 2	Gold
<b>D59-37-160</b>	KYB	Red

Bike	Year	Part #
CRF250R	00-07	<b>D59-37-158</b>
CRF250R	04-19	<b>D59-37-158</b>
CRF450R	02-08	<b>D59-37-158</b>
CRF450R	09-16	<b>D59-37-160</b>
CRF250RX	17-19	<b>D59-37-158</b>
CRF250RX	19	<b>D59-37-158</b>
CRF450L	19	<b>D59-37-158</b>
CRF250X	04-17	<b>D59-37-158</b>
CRF450X	05-19	<b>D59-37-158</b>
YZ125	00-19	<b>D59-37-160</b>
YZ250	00-19	<b>D59-37-160</b>
YZ250F	01-19	<b>D59-37-160</b>
YZ426F/450F	00-19	<b>D59-37-160</b>
YZ125X	17-19	<b>D59-37-160</b>
YZ250X	16-19	<b>D59-37-160</b>
YZ250FX	15-19	<b>D59-37-160</b>
YZ450FX	16-19	<b>D59-37-160</b>
WR250F	03-19	<b>D59-37-160</b>
WR450F	03-19	<b>D59-37-160</b>
KX80/85	89-13	<b>D59-37-160</b>
KX125	00-08	<b>D59-37-160</b>
KX250	00-08	<b>D59-37-160</b>
KX250F	04-05	<b>D59-37-160</b>
KX250	06-18	<b>D59-37-158</b>
KX250	19	<b>D59-37-158</b>
KX450F	06-14	<b>D59-37-160</b>
KX450F	15-19	<b>D59-37-158</b>
KX450	19	<b>D59-37-159</b>
KLX450R	07-16	<b>D59-37-160</b>
RM250	01-02	<b>D59-37-160</b>
RM250	04-06	<b>D59-37-160</b>
RM-Z250	07-15	<b>D59-37-159</b>
RM-Z250	16-18	<b>D59-37-160</b>
RM-Z450	08-17	<b>D59-37-159</b>

Bike	Year	Part #
TC85	14-19	<b>D59-37-157</b>
TC125	14-19	<b>D59-37-157</b>
TC250	12-13	<b>D59-37-160</b>
TC250	14-19	<b>D59-37-157</b>
TC449	11-13	<b>D59-37-160</b>
FC250	14-19	<b>D59-37-157</b>
FC350	14-19	<b>D59-37-157</b>
FC450	14-19	<b>D59-37-157</b>
TE125	14-16	<b>D59-37-157</b>
TE150	17-19	<b>D59-37-157</b>
TE250	12-13	<b>D59-37-160</b>
TE250	14-19	<b>D59-37-157</b>
TE300	14-19	<b>D59-37-157</b>
TE310	12-13	<b>D59-37-160</b>
TE449	11-13	<b>D59-37-160</b>
TE511	11-13	<b>D59-37-160</b>
FE250	14-19	<b>D59-37-157</b>
FE350	14-19	<b>D59-37-157</b>
FE350S	15-16	<b>D59-37-157</b>
FE450	14-19	<b>D59-37-157</b>
FE501	14-19	<b>D59-37-157</b>
FE501S	15-16	<b>D59-37-157</b>
TX125	17-18	<b>D59-37-157</b>
TX300	17-19	<b>D59-37-157</b>
TXC449/511	11-13	<b>D59-37-160</b>
FX350/450	17-19	<b>D59-37-157</b>

Bike	Year	Part #
85SX	04-19	<b>D59-37-157</b>
125SX	01-19	<b>D59-37-157</b>
150SX	09-19	<b>D59-37-157</b>
250SX	02-19	<b>D59-37-157</b>
250SX-F	06-19	<b>D59-37-157</b>
350SX-F	11-19	<b>D59-37-157</b>
450SX-F	03-19	<b>D59-37-157</b>
125EXC	05-16	<b>D59-37-157</b>
200EXC	05-16	<b>D59-37-157</b>
250EXC/TPI	05-19	<b>D59-37-157</b>
300EXC/TPI	05-19	<b>D59-37-157</b>
250EXC-F	06-19	<b>D59-37-157</b>
350EXC-F	12-19	<b>D59-37-157</b>
450EXC-F	08-19	<b>D59-37-157</b>
500EXC	12-19	<b>D59-37-157</b>
150XC	10-14	<b>D59-37-157</b>
250XC	06-18	<b>D59-37-157</b>
300XC	06-18	<b>D59-37-157</b>
250XC-F	11-18	<b>D59-37-157</b>
350XC-F	11-19	<b>D59-37-157</b>
450XC-F	08-19	<b>D59-37-157</b>

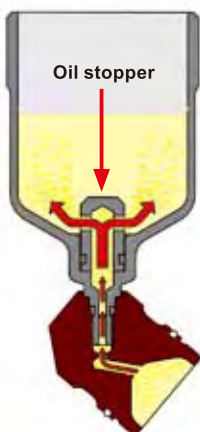
Bike	Year	Part #
125XC-W	17-18	<b>D59-37-157</b>
150XC-W	17-19	<b>D59-37-157</b>
200XC-W	06-16	<b>D59-37-157</b>
250XC-W	06-19	<b>D59-37-157</b>
300XC-W	06-19	<b>D59-37-157</b>
250XCF-W	06-16	<b>D59-37-157</b>
350XCF-W	12-16	<b>D59-37-157</b>
450XC-W	07-16	<b>D59-37-157</b>
500XC-W	12-16	<b>D59-37-157</b>
EC250	18-19	<b>D59-37-160</b>
XC250	18-19	<b>D59-37-160</b>
EC300	18-19	<b>D59-37-160</b>
XC300	18-19	<b>D59-37-160</b>
enduroGP 250	18-19	<b>D59-37-160</b>
enduroGP 300	18-19	<b>D59-37-160</b>

### BLEEDING BOLT TYPE

Use only cup for the suspension equipped air bleeding bolt.

### OIL STOPPER

Oil stopper in cup prevents sudden oil spit.



Rotating bleed cup to change its angle for better air bleeding.

**DRC**

## GAS CAP EXTRACTOR

- Special tool for removing rear suspension gas cap.
- Does not damage gas cap valve thread.

Part number **D59-37-110**



Also useful to pull out the top cap of the air front suspension.



# FORK SEAL DRIVER

FORK DIAMETER  
Φ 40 - Φ 50



## FRONT SUSPENSION TOOL

**DRC**  
HARDWARE



YouTube



**DRC**

### FORK SEAL DRIVER 40 - 50

- Specially designed fork seal driving tools for front forks.
- Comes with 5 different size plastic adapters. Can be used on almost all conventional and up side down front forks.
- Flange shape design of steel body for accurate operation with less power.

Body : Steel Body

adapter size ( mm ) : 40/41,42/43,45/46,47/48,49/50

Part number **D59-26-005**

Replacement adapter set **D59-26-909**



#### Fork diameter 40 mm - 50 mm

Use the best size from 5 adapters.  
Won't damage seals.  
Fitting angle of the seals will always be correct.



#### Ergonomic flange body shape

Flange body shape for accurate operation.  
Best body weight to drive seals.

#### Plastic adapters to prevent damage to inner tube

Plastic adapters won't damage inner tube during seal driving.



**DRC**

### FRONT FORK SEAL INSERT GUIDE



- Front fork dust and oil seal insert guide.
- Prevents damaged seals during installation.
- Made of smooth surface stainless steel for easy installation of your dust and oil seals.

Part number **D59-37-148** Size 48 mm





**You can check from sag with this tool.**

## DRC SAG CHECKER

- Allows you to measure suspension sag by yourself easily.
- Measure front and rear suspension sag easily with this kit.
- Clamp comes with rubber and will not damage your plastic fenders or side panels.
- Clamp anywhere on side panels, rear fender or sub frames, to measure suspension sags.
- Compact design, it does not take much space in your tool box.

Part number **D59-37-180**

PATENT PENDING



**After checking sag, remove clamp from side panel, and attach sag body**

## HOW TO

**PLEASE WEAR YOUR ALL RACE GEAR WHEN YOU CHECK YOUR SAG!**

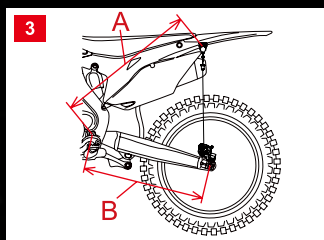


**1**

**LIFT UP YOUR BIKE BY STAND AND MAKE WHEEL DOES NOT CONTACT WITH GROUND.**



Check length between swing arm axle to rear wheel axle



Clamp at the Position where A and B are the same distance.



Attach sag checker clamp on side panel or rear fender.



And attach sag checker body on swing arm by hooking hook into axle shaft hole.



Lower your bike and sit in riding position. move your suspension to get normal position.



Get off the bike, set gold marker on the sag checker body.



Sit on again, position in normal, and leave the whole body weight on the bike.

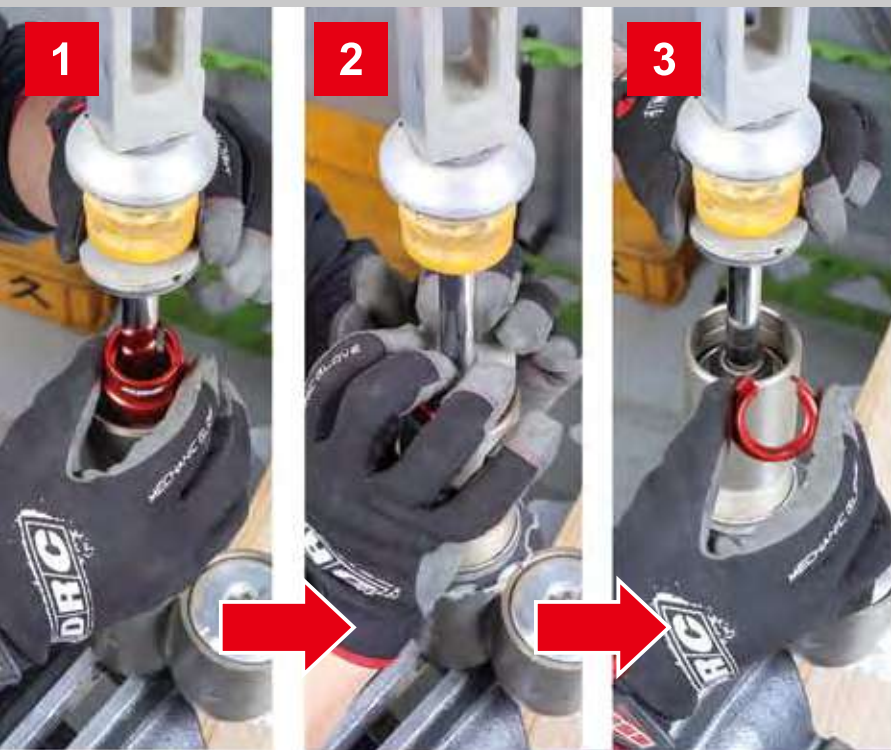


Get off the bike slowly and lift the bike.



Measure the distance of the wire from the main body to the lower end of the marker.





## DRC SEAL HEAD PUSH TOOL

- A useful tool for disassembling rear shock.
- It can be easily pushed down without damaging the seal head when detaching the circlip of the shock body.

Part number **D59-37-166**



## DRC COMP ADJUSTER SOCKET 24mm

- A special tool to remove the compression adjuster of the rear shock.
- It is possible to easily remove the shock body of a shape which doesn't allow to be approached by the spanner or the monkey wrench for 24 mm width.
- By providing a square hole of 3/8 inch socket, you can use the ratchet wrench to increase work efficiency and use torque wrench to control tightening torque.

Part number **D59-37-164**



## DRC RCU SEAL HEAD INSERT KIT

- Seal guide for Rear suspension seal head.
- Does not damage oil seal during installing suspension seal.
- Comes with 3 different sizes, 14 mm, 16 mm and 18 mm.

Part number **D59-37-135**



**DRC**

## PRO CHAIN TOOL

- Designed to break, press side plates and rivet most 420, 428, 520, 525 and 530 standard and O-ring chains.
- Light weight aluminum body.
- Straight forward parts construction.
- Conveniently store cut and rivet pins in the handle.
- Fits nicely in the tool box and no loose parts.
- Replacement cut pins and rivet pin available.

Part number  
**D59-16-112**

YouTube



Stored in handle



## REPLACEMENT PARTS

Replacement anvil set

Part number **D59-16-142**

Replacement cut pin set

Part number **D59-16-143**

Replacement rivet pin

Part number **D59-16-144**

**DRC**

## ALUMINUM CHAIN CUTTER

- Very compact chain cutter for 420 to 520 size chains.
- Compact design for easy storage.
- Chain cutter body is made of light weight aluminum.
- Cutting pin is made of durable chromoly.
- Available in 3 anodized colors, silver, black and blue.

Part number    Color  
**D59-16-340**    Silver  
**D59-16-351**    Black  
**D59-16-352**    Blue



Replacement pin  
Part number **D59-16-333**

**DRC**

## CHAIN BRUSH

- Drive chain cleaning brush.
- " L " shaped brush easily cleans the chain.
- Aluminum tube handle designed for comfortable operation.
- Available in blue, red and titanium anodized handle colors.
- Replacement brushes available.

Part number    Color  
**D59-22-001**    Blue  
**D59-22-002**    Red  
**D59-22-003**    Ti-Color

Replacement brushes set

Part number  
**D59-22-990**



Slide Body

Main Body

Shaft

DRC

## LINK LUBE INJECTOR

- Linkage bearing grease tool.
- Allows placing bearing needles on bearing race while greasing linkage bearing.
- Will fill enough grease on your suspension linkage bearing.
- Clean linkage grease works with this tool.

Part number **D59-18-301**

\* Can not place all bearing needle on injection body.

YouTube



## HOW TO



Apply grease to the shaft.



Insert the shaft into the main body.



Push the shaft and extrude the grease to easily stick the bearing needles.



Attach the bearing needles on the slide body.

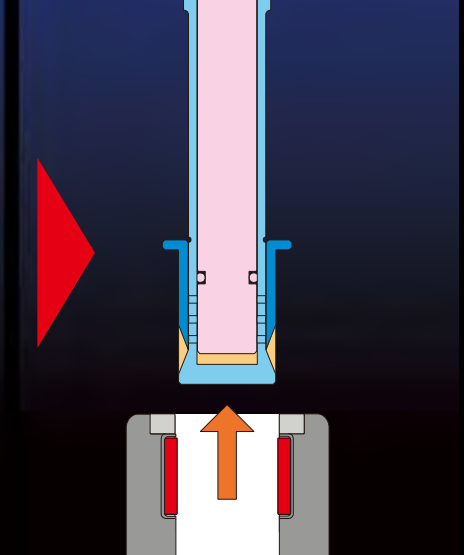
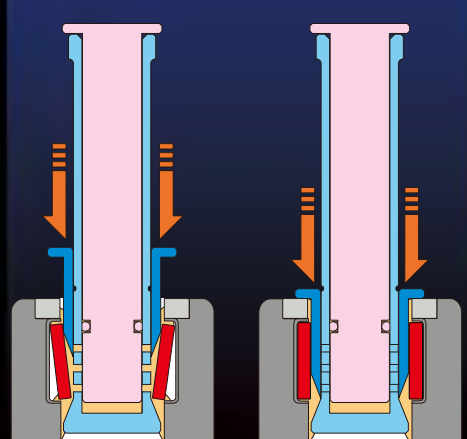
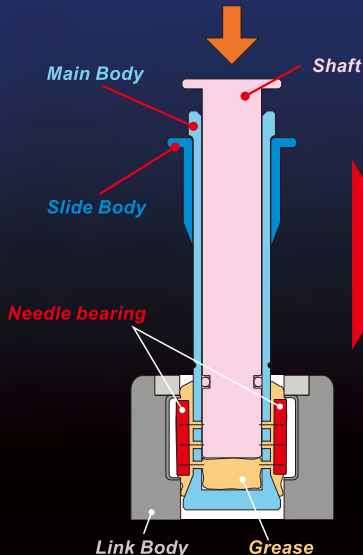
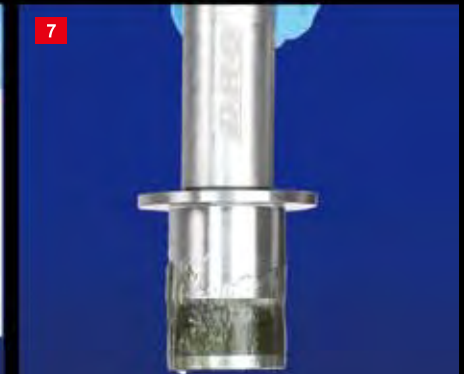
\*Can not place all bearing needles on the injection body



- Insert the tool into the linkage carefully and gently so as not to slip the bearing needles.
- Push the shaft to extrude grease to attach the bearing needles inside the shell.



The bearing needles will be placed inside the shell by pushing the slide body further.







Throttle tube cut



Handlebar cut 1



Comes with 5 mm hole drilling guide for handlebar.



Handlebar cut 2



**DRC**

## HANDLEBAR SAW GUIDE

- Saw guide designed to easily cut handlebar and throttle tube.
- Make your handlebar cut easy and vertically.
- Comes with 5 mm hole drilling guide for handlebar.
- \* Do not over tighten when you set this saw guide on throttle tube.
- \* Do not use electric saw with this kit.

**Part number** Cutting pipe size

**D59-45-211** From 22.2 mm to 26 mm



**DRC**

## AIR VALVE EXTENSION with HOSE

- Air valve extension with a hose.
- Easy to operate with flexible rubber hose.
- Hose length : 150 mm

**Part number** **D58-12-110**



**DRC**

## AIR VALVE EXTENSION

- Extension air valve changes the valve angle.
- Great for use on small wheel motorcycle, motor wheels with a big brake disc.
- For use with straight type air pump hose.

**Part number** **D58-12-100**



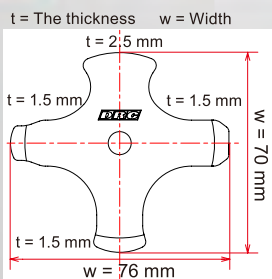
**DRC**

## TIMING PLUG WRENCH

- Wrench can be used for most motorcycle engine plugs.
- Comes with 4 different wrench sizes.
- Made of durable steel with black electro coating finish for less corrosion.
- Can be used for helmet visor screws.

**Part number** **D59-45-101**

**Size** W : 76 mm x H : 70 mm



**DRC**

## RELEASE TIE WRAP

- Releasable tie wrap, can be re-used.
- Length : 150 mm
- 6 pcs per pack.

**Part number** **D58-10-101**



## DRC GYRO STAND

- One stand works for truing, balancing wheels and checking bearings.
- Durable frame provides stability for accurate wheel truing and balancing.
- Accepts rim widths up to 5.0 inches, rim sizes up to 23 inches.
- Foldable design saves space.
- Use on wheels with bearing inner diameter of more than 15 mm.

Part number **D36-52-110**

\* Optional shaft set is required for bearing diameters less than 15 mm.

YouTube



### MXA RATING



Given its reasonable price, the DRC Gyro stand could pay for itself in a couple of do-it-yourself wheels-truing sessions.

## Wheel Truing Bearing Check



Lock wheel rod for wheel truing and bearing check.

## Wheel Balance



Double bearing roller for wheel balancing.



Can be folded to a very compact size for storage.

### DRC OPTIONAL 10 mm SHAFT SET

- For wheel bearings with inner diameters from 10 mm to 15 mm.

Part number **D36-52-191**



## Wheel Truing Bearing Check

## Wheel Balance

## DRC GYRO EASY

- Simple wheel balancing, truing and bearing check kit.
- Light weight and compact design.
- Can be used on all motorcycle wheels.
- Can be used on wheels with bearing diameter of more than 15 mm.

Part number **D36-52-120**

\* Optional shaft set is required for bearing diameters less than 15 mm.





**DRC**

## PRO CHAIN TOOL

- Designed to break, press side plates and rivet most 420, 428, 520, 525 and 530 standard and O-ring chains.
- Light weight aluminum body.
- Straight forward parts construction.
- Conveniently store cut and rivet pins in the handle.
- Fits nicely in the tool box and no loose parts.
- Replacement cut pins and rivet pin available.

Part number  
**D59-16-112**

YouTube



Stored in handle



## REPLACEMENT PARTS

Replacement anvil set

Part number **D59-16-142**

Replacement cut pin set

Part number **D59-16-143**

Replacement rivet pin

Part number **D59-16-144**

**DRC**

## ALUMINUM CHAIN CUTTER

- Very compact chain cutter for 420 to 520 size chains.
- Compact design for easy storage.
- Chain cutter body is made of light weight aluminum.
- Cutting pin is made of durable chromoly.
- Available in 3 anodized colors, silver, black and blue.

Part number    Color  
**D59-16-340**    Silver  
**D59-16-351**    Black  
**D59-16-352**    Blue



Replacement pin  
Part number **D59-16-333**

**DRC**

## CHAIN BRUSH

- Drive chain cleaning brush.
- " L " shaped brush easily cleans the chain.
- Aluminum tube handle designed for comfortable operation.
- Available in blue, red and titanium anodized handle colors.
- Replacement brushes available.

Part number    Color  
**D59-22-001**    Blue  
**D59-22-002**    Red  
**D59-22-003**    Ti-Color

Replacement brushes set

Part number  
**D59-22-990**





Can be used as gauge for chain play.



A. Lightly attach Chain Checker on the chain roller.



B. Lower the measuring nib. Extension rate will be shown on measuring nib where it touches the chain roller.

Gauge for chain play



Extension ratio shown by percentage.

**DRC**

## CHAIN CHECKER

- Chain extension ratio checker. Very easy to check chain extension on your bike.
- Chain sizes from 420, 428, 520, 525 and 530 can be checked.
- Chain play gauge is printed on the body.

**Part number**

**D59-16-801**



**DRC**

## PRO SPOKE WRENCH

- Interchangeable tips to fit 8 sizes of spoke nipples.
- Main shaft is CNC precision machined from 7075A aluminum and designed for optimum grip.
- Tips are made of heat treated steel for strength.
- Available in 3 hard anodized colors.
- Standard and mini sizes available.



**Tips Size 5.6 - 7.0 ( Standard )**

( 5.6 / 5.8 / 6.0 / 6.2 / 6.4 / 6.6 / 6.8 / 7.0 mm )

**Part number**

**D59-15-060**

**D59-15-061**

**D59-15-062**

**Color**

Ti-Color

Red

Blue

**Tips Size 4.0 - 6.2 ( Mini )**

( 4.0 / 4.4 / 5.0 / 5.2 / 5.6 / 5.8 / 6.0 / 6.2 mm )

**Part number**

**D59-15-160**

**D59-15-161**

**D59-15-162**

**Color**

Ti-Color

Red

Blue

**DRC**

## SPOKE WRENCH CRF50/DRZ50

- Spoke wrench for CRF / XR50, DRZ50 / 70 and KX65.
- Tip size is 4.0 mm for stock CRF / XR50, DRZ50 / 70 and KX65 spoke nipples, 5.0 mm size for after market spoke nipples.
- Made of durable steel.

**Part number**

**D59-15-900**

**Tips Size**

4.0 mm & 5.0 mm





# SUSPENSION TOOL



ENZO DRC

## BASE VALVE WRENCH

- ENZO DRC co-developed product.
- Designed to remove and tighten front fork compression valve cap.
- Available KYB AOS, KYB PSF1, SHOWA and WP cone valve suspensions.
- Size : 60 diameter. 1/2"DR



Part #	Size	Color
ED59-37-201	KYB AOS	Black
ED59-37-202	KYB PSF1	Blue
ED59-37-203	SHOWA AOS	Red
ED59-37-204	WP CONE VALVE	Orange



\*Without bucket

ENZO DRC

## CARTRIDGE STAND

- ENZO DRC co-developed product.
- Suspension inner cartridge stand makes pouring oil and assemble compression valve into the cartridge easy.
- Can be used as oil drainage stand.
- Aluminum body made will not damage your suspension components.
- Does not include pan.
- Size : H 352 mm x W 260 mm (13.85 inch x 10.2 inch)

Part number  
ED59-37-230

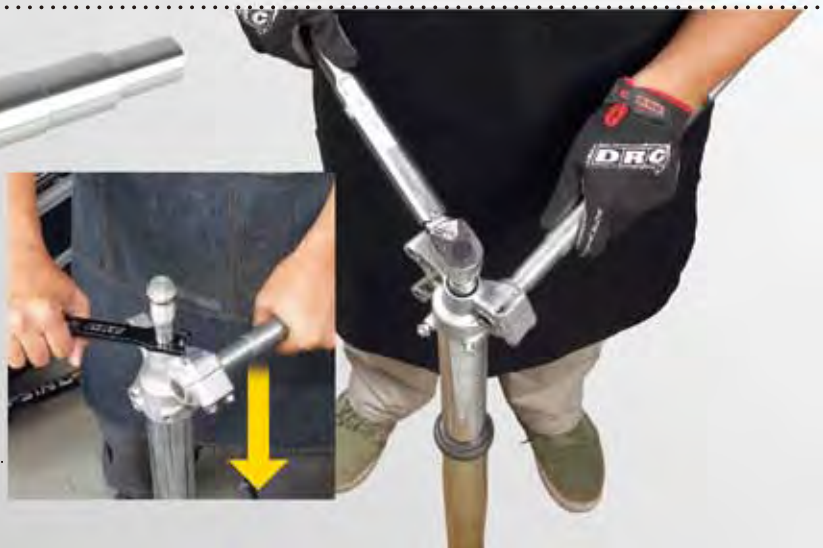


ENZO DRC

## FRONT FORK BRACKET HOLDER

- ENZO DRC co-developed product.
- Pushing front fork bracket easier when holding inner cartridge rod.
- Can be used on 20 mm, 22 mm, 25 mm, 26 mm and 27 mm axle sizes.

Part number Size  
ED59-37-240 Diameter 32 mm x Length 320 mm







**ENDURO**

# YUTARO UCHIYAMA

**DRC**

## PLUG PROTECTOR

- Protects the plugs in your tool box.
- Available in 3 sizes.
- The clear cap allows you to identify the plug without opening.
- High-impact plastic construction

**B-Type ( 14 mm ) Color**  
**D58-14-016** Clear / Red

**C-Type ( 10 mm ) Color**  
**D58-14-215** Clear / Blue  
**D58-14-216** Clear / Red

**D-Type ( 12 mm ) Color**  
**D58-14-115** Clear / Blue  
**D58-14-117** Clear / Black



Bike	Type
<b>HONDA</b>	
CR85R/125R/250R	B
CRF150R	C
CRF250R/X	C
CRF450R/X	B
CRF250L/M	C
XR50/100MOTARD	C
XR230	D
XR250/MOTARD	C
XR400MOTARD	D
XR650R	B
<b>YAMAHA</b>	
YZ85/125/250	B
YZ250F/450F	C
YZ250FX	C
WR250F/450F	C
TT-R50E/125LWE	C
WR250R/X	C
SEROW225/250	D

Bike	Type
<b>KAWASAKI</b>	
KX65/85/125/250	B
KX250F/450F	C
KLX110	C
KLX250/450R	C
SUPER SHERPA	C
<b>SUZUKI</b>	
RM85/125/250	B
RMZ250/450	C
DJEBEL250	C
DRZ400	C
<b>KTM</b>	
SX65/85/125/250	B
SX-F250/450	C
EXC125/200/250	B
EXC-F250	C
EXC-R400/450/525	D
950SER	C

Bike	Type
<b>HUSQVARNA</b>	
TE250/450	C
<b>GASGAS</b>	
EC125/200/250	B
<b>APRILIA</b>	
RXV450	C



## DRC OIL BOTTLE

- Portable 2 stroke oil bottle.
- Easy to mix fuel for your 2 stroke at gas station.
- Measures 5 cc and 30 cc.
- Small enough to fit almost anywhere.

**Part number**  
**D59-44-020**



## DRC SPRING HOOK

- Easy exhaust spring removal.
- Excellent grip with the PVC coated handle.

**Part number**  
**D59-08-020**



## DRC WIRE OILER

- To inject lubricant into cable housing.
- Available in 3 hard anodized colors.

**Part number**  
**D59-18-131** Ti-Color  
**D59-18-132** Red  
**D59-18-133** Black



Replacement  
inner rubber  
**Part number**  
**D59-18-199**